

SECTION 25

Township 78-North; Range 2
EAST OF THE FIFTH PRINCIPAL MERIDIAN
SCOTT COUNTY, IOWA
BLUE GRASS TOWNSHIP

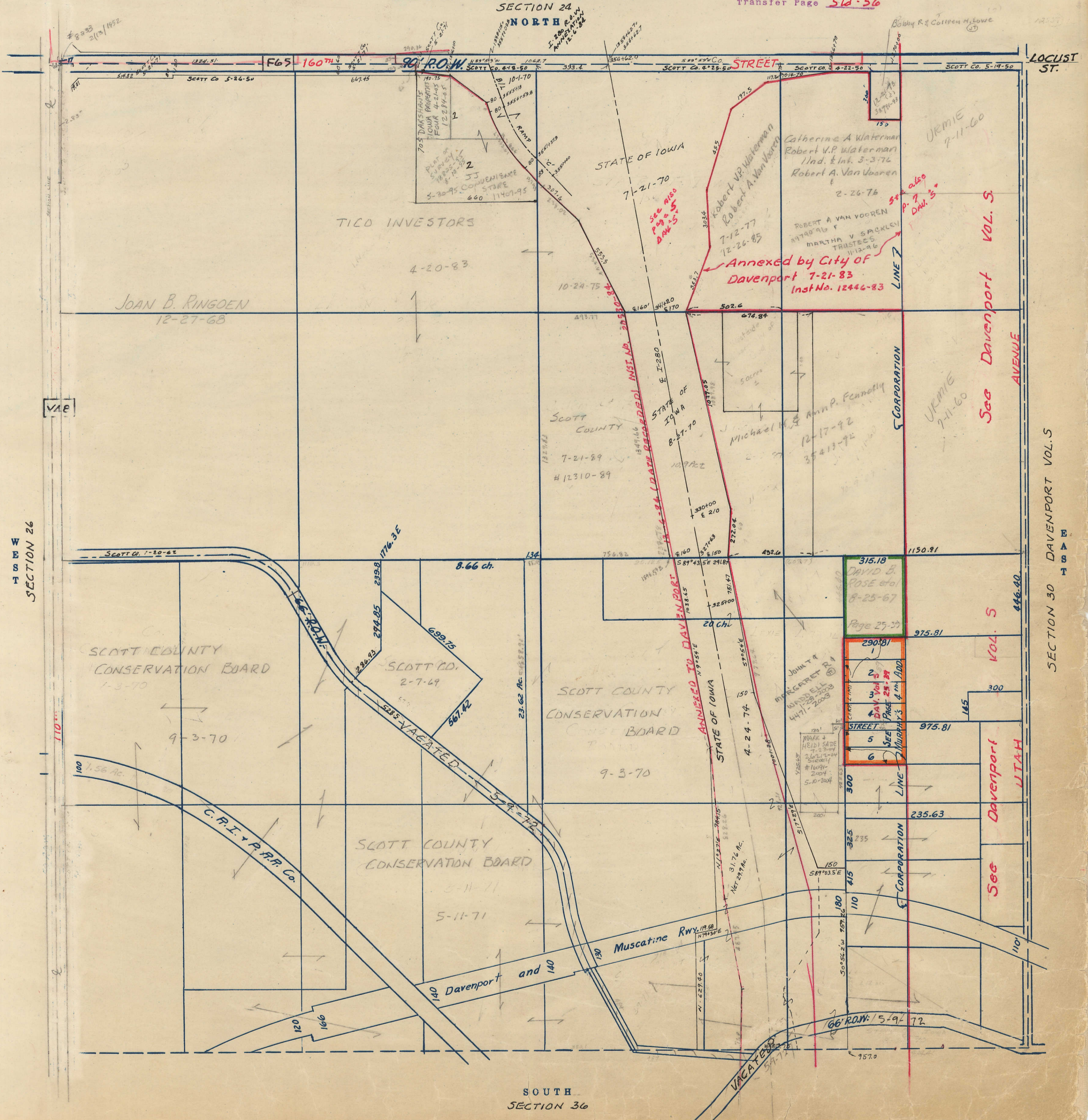
SCALE IN CHAINS



SCALE IN FEET



Transfer Page 51d-56



SOUTH SECTION 36

SECTION 30 DAVENPORT VOL. 5

SEE DAVENPORT VOL. 5

SEE DAVENPORT VOL. 5

URMIE 7-11-60

URMIE 7-11-60

SEE ALSO PAGE 51d-56

SEE PAGE 25-27

SEE MURPHY'S 4th ADD

SEE MURPHY'S 4th ADD

SEE MURPHY'S 4th ADD

ANNEXED BY CITY OF DAVENPORT 7-21-83
Inst. No. 12446-83

ANNEXED TO DAVENPORT 7-21-83
Inst. No. 12446-83

STATE OF IOWA 7-21-70

STATE OF IOWA 8-27-70

STATE OF IOWA 4-24-74

STATE OF IOWA 9-3-70

Muscatine Rwy 1958

JOAN B. RINGOEN 12-27-68

SCOTT COUNTY CONSERVATION BOARD 1-3-70

9-3-70

SCOTT COUNTY CONSERVATION BOARD 5-11-71

100 Davenport and 140

Catherine A. Waterman
Robert V.P. Waterman
Ind. & Int. 3-3-76
Robert A. Van Vooren
2-26-76

ROBERT A. VAN VOOREN
MARTHA V. SACKLEY
TRUSTEES
11-12-96

Michael H. & Ann P. Fennoy
12-17-92
35413-92

DAVID B. ROSE et al
8-25-67

290.81

975.81

235.63

325

110

957.0

WIAH AVENUE

WIAH AVENUE

WIAH AVENUE

VAE

SECTION 26

LOCUST ST.

SECTION 30 DAVENPORT VOL. 5